

MLC405N Truck Scale Electronic Floor Scale Column Load Cell 50t

Model: MLC405N

Category: Column load cells

Range: 10t, 20t, 25t, 30t, 40t, 50t

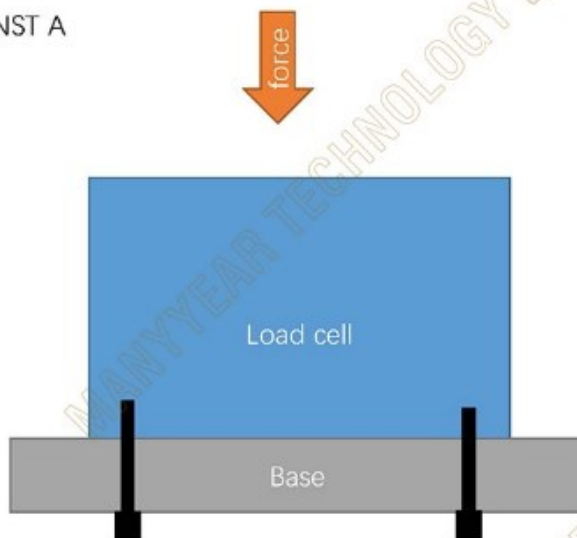
Size: 85*150mm

Material: Alloy steel, Stainless steel

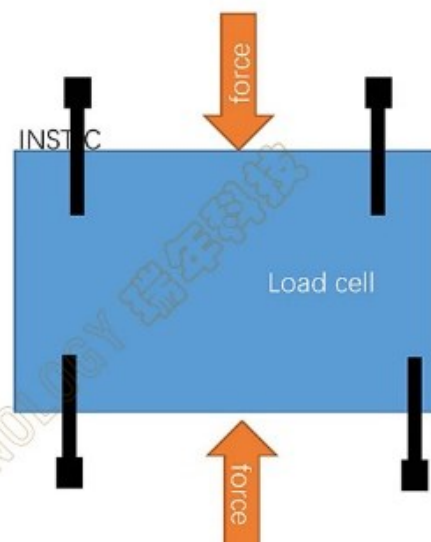
Application: Truck scale, electronic floor scale, axle scale, load cell

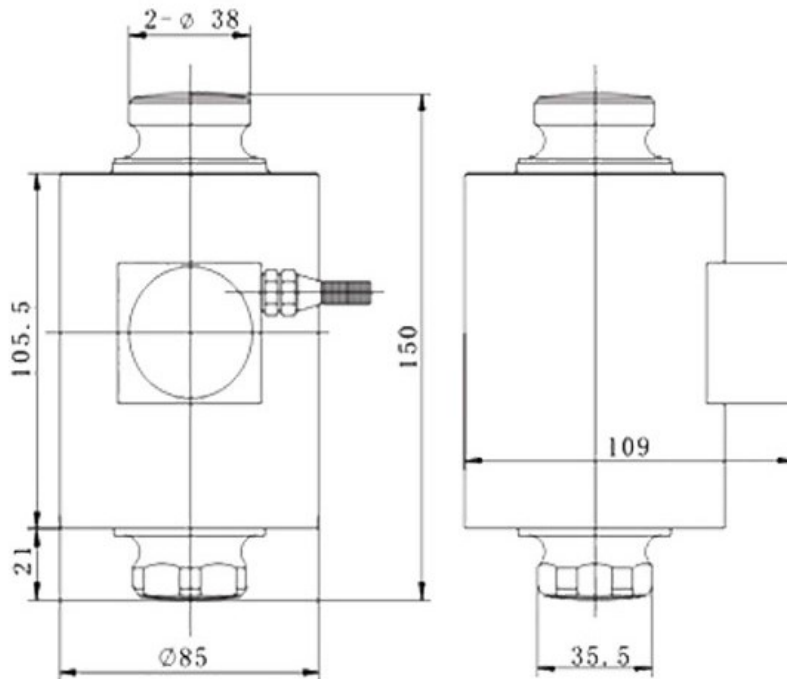


INST A



INST C

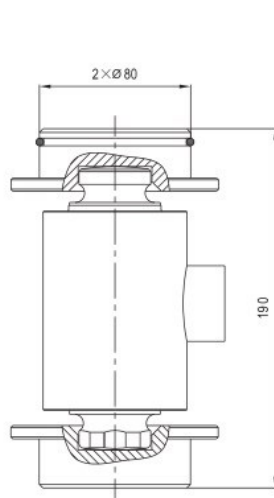




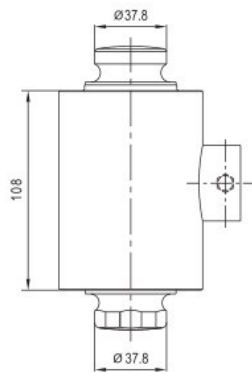
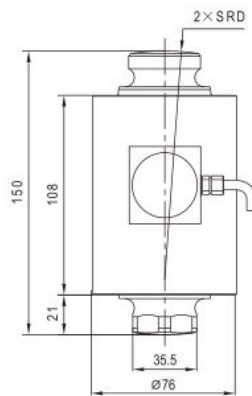
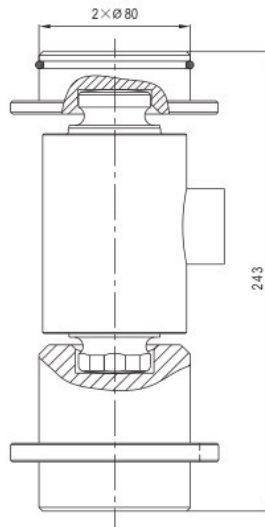
Technical specifications

Comprehensive error:	0.02%FS	Output resistance:	1000 \pm 3 Ω
Rated output:	2 \pm 0.002 mv/v	Insulation resistance:	\geq 5000M Ω (100VDC)
Nonlinearity:	0.03%FS	Operating Voltage:	5~12VDC
Lag:	0.03%FS	Compensation temperature:	-10~+40 $^{\circ}$ C
Repeatability:	0.02%FS	Operating temperature:	-30~+70 $^{\circ}$ C
Creep:	0.02%FS/10MIN	Effect of Temp. on zero point:	0.02%FS/10 $^{\circ}$ C
Zero balance:	\pm 1%FS	Effect of Temp. on sensitivity:	0.02%FS/10 $^{\circ}$ C
Input resistance:	1160 \pm 10 Ω	Protection level:	IP66&IP68

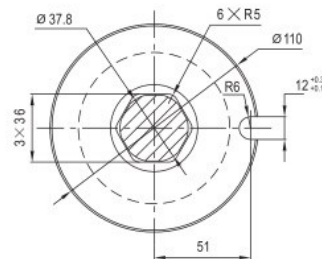
Mounting variation 1: 安装方式1:
含承载头组件CTD/ZOU-A



Mounting variation 2: 安装方式2:
含承载头组件CTD/ZOU-B



传感器限位示意图



Mounting variation 1 and variation2 : 安装方式1与2:

Maximum capacity (E _{max}) 额定载荷	t	15	20	30	40	50
R ball 球头半径	mm	160			200	305
a _{max} 最大允许倾斜角度	" ° "	5			5	4.5
S _{max} 最大允许侧向偏移	mm	11			11	10