



MANYYEAR TECHNOLOGY

Tension and Compression Load Cell Catalog

MLC324 - Safety Overload Crane Tension Load Cell 200t

Model: MLC324

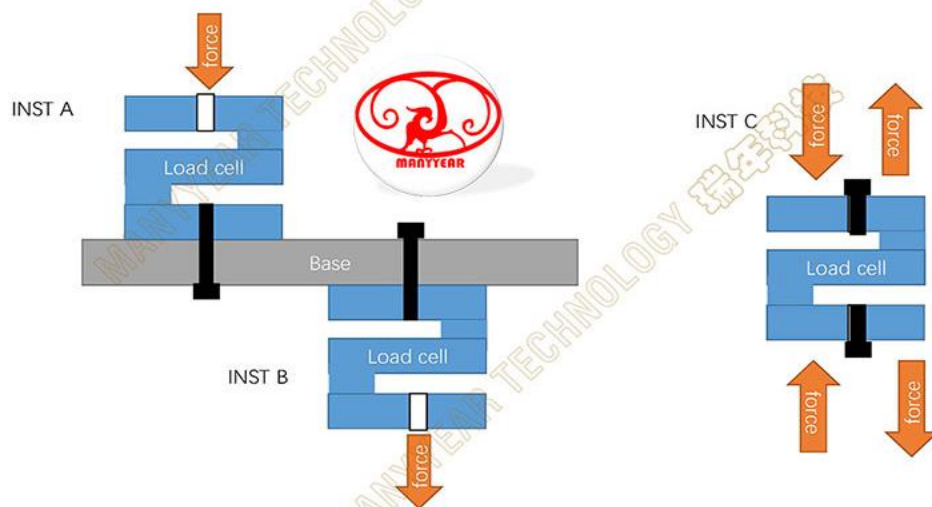
Category: S-type load cell

Range: 15t, 20t, 30t, 50t, 100t, 150t, 200t, 300t

Size: 340*130*48mm; 620*171*47mm; 500*190*130mm

Material: Alloy steel, Stainless steel

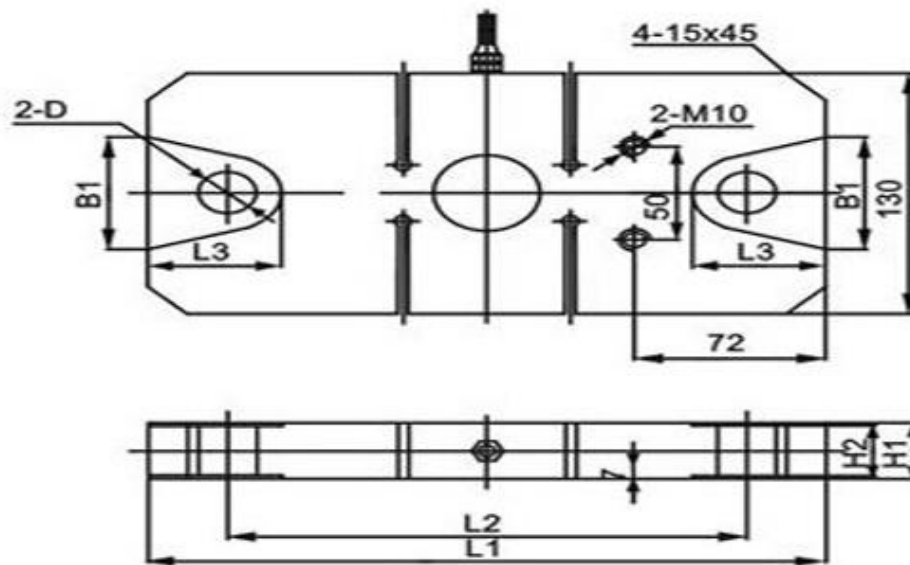
Application: hook scale, crane safety overload, tensile force tester



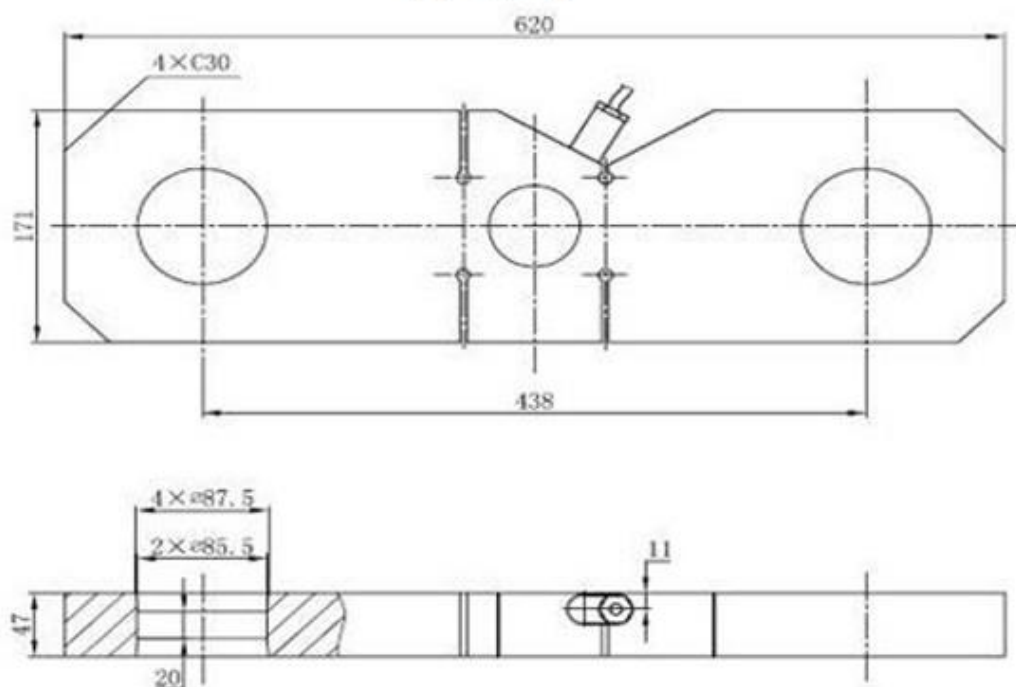


MLC324-SIZE

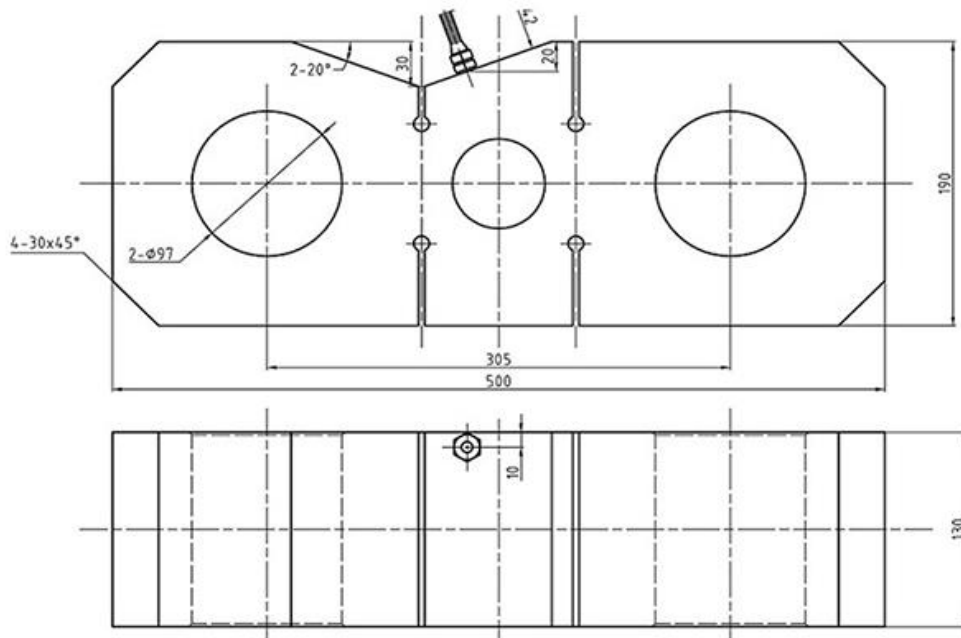
5-10T



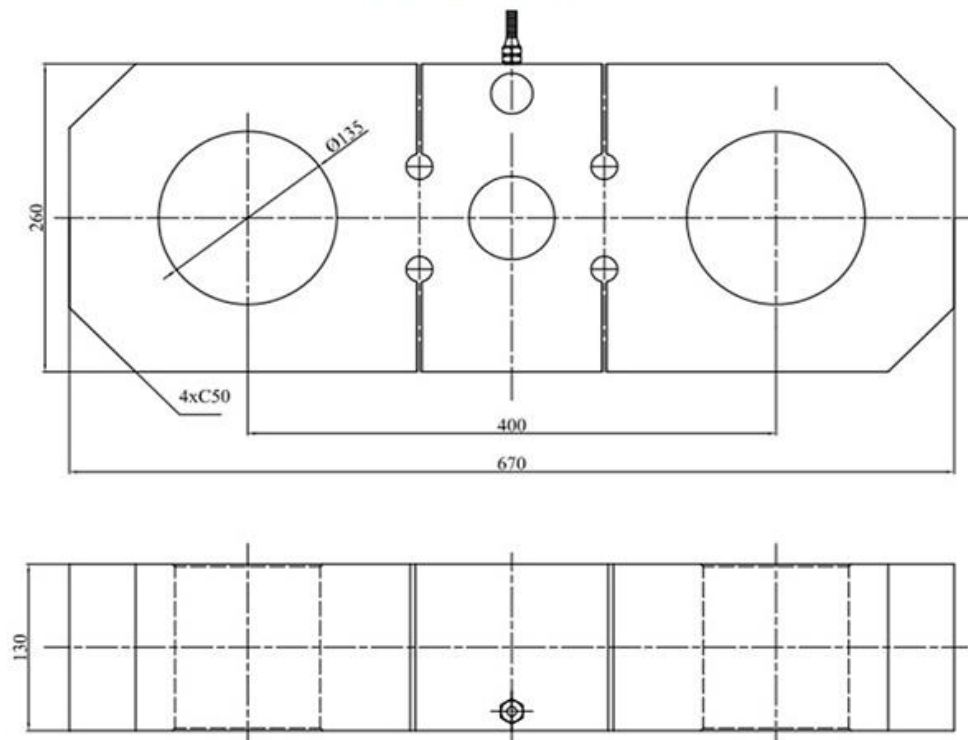
50T



100-150T



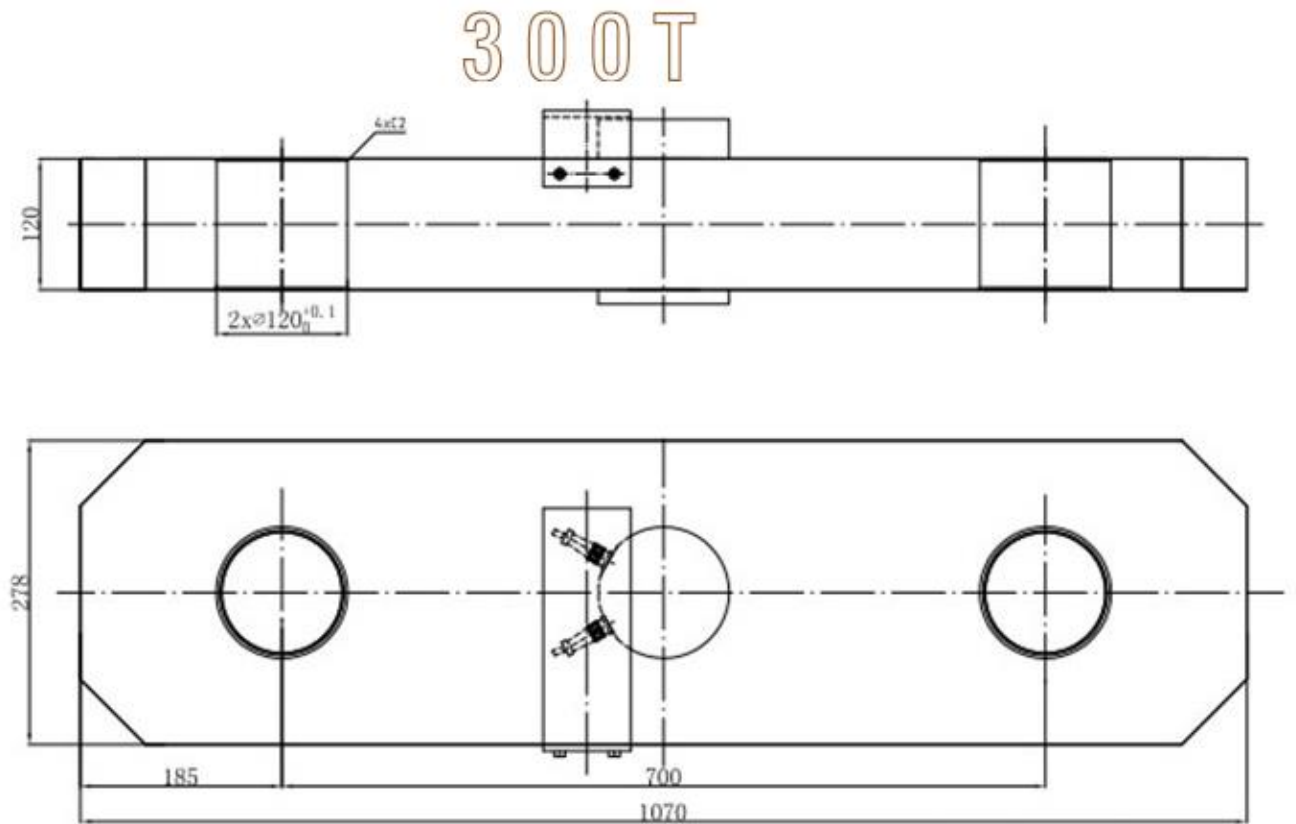
200T





MANYYEAR TECHNOLOGY

Tension and Compression Load Cell Catalog



Technical specification

Comprehensive error:	0.05%FS	Output resistance:	352±5Ω
Rated output:	1.8±0.005mV/V	Insulation resistance:	≥5000MΩ(100VDC)
Nonlinearity:	0.05%FS	Operating Voltage:	9~12VDC
Lag:	0.05%FS	Compensation temperature:	-10~+40℃
Repeatability:	0.03%FS	Operating temperature:	-20~+55℃
Creep:	0.03%FS/10Min	Effect of Temp. on zero point:	0.05%FS/10℃
Zero balance:	±1%FS	Effect of Temp. on sensitivity:	0.05%FS/10℃
Input resistance:	380±10Ω	Protection level:	IP66 & IP68
Comprehensive error:	200%	Output resistance:	300%