

MLC320 -Hook scale tension test load cell sensor 200kg

Model: MLC320

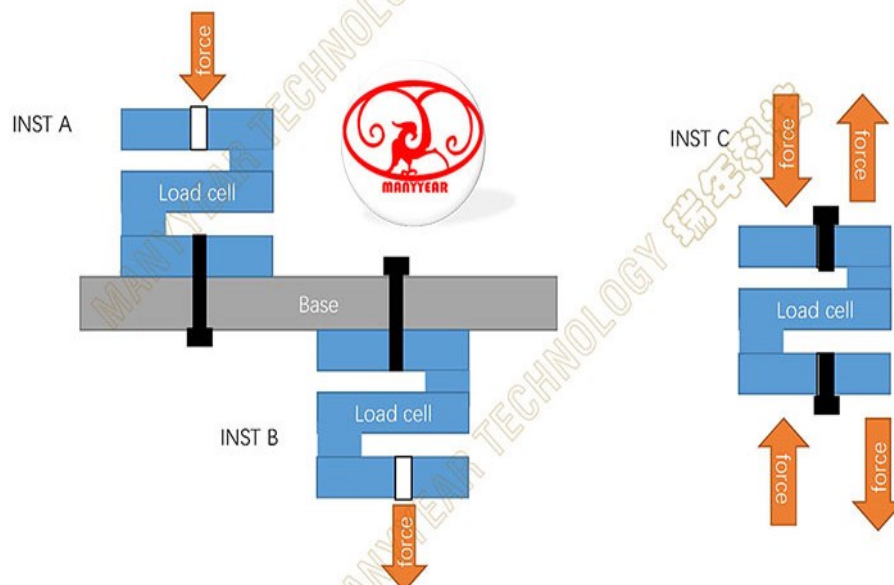
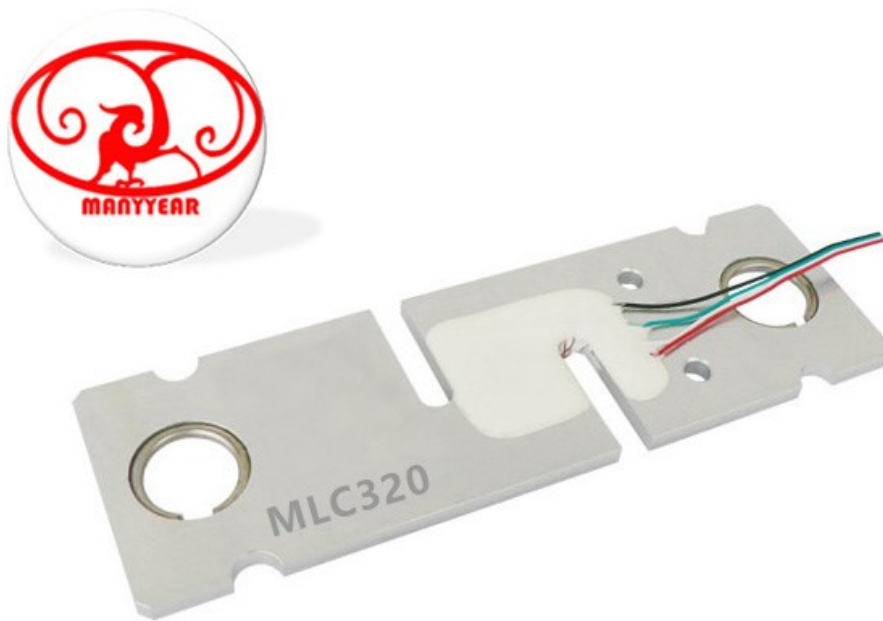
Category: S-type load cell

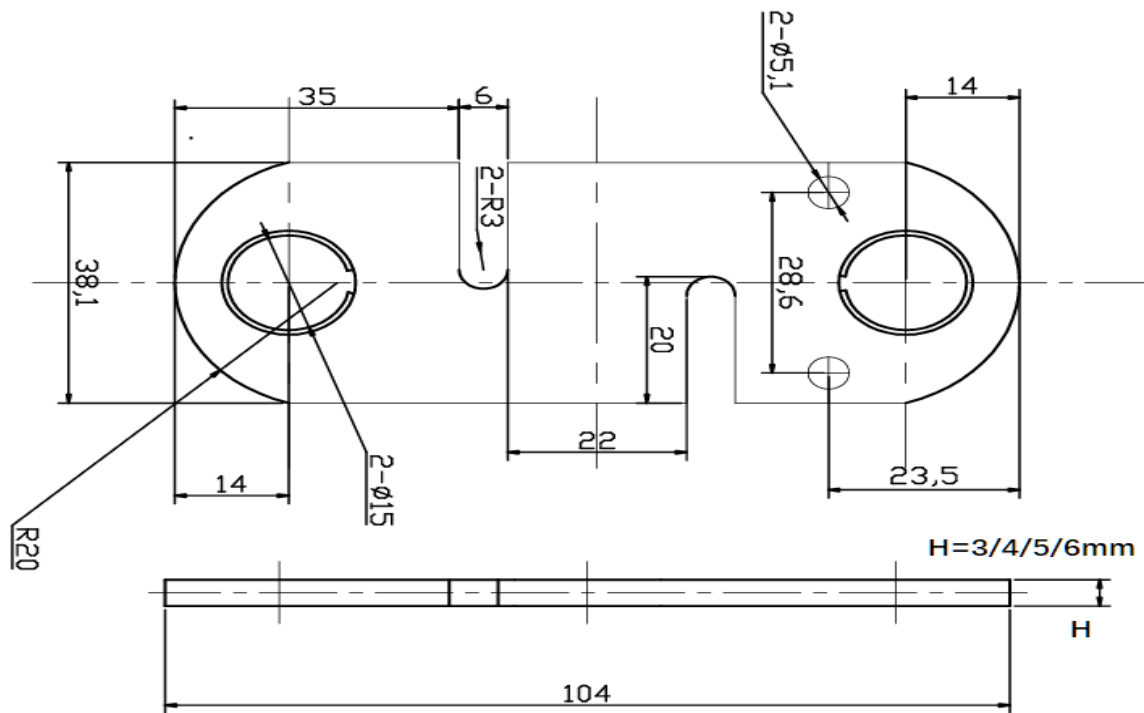
Range: 100,150,200,250,300,350,400KG

Size: 80*40*4MM

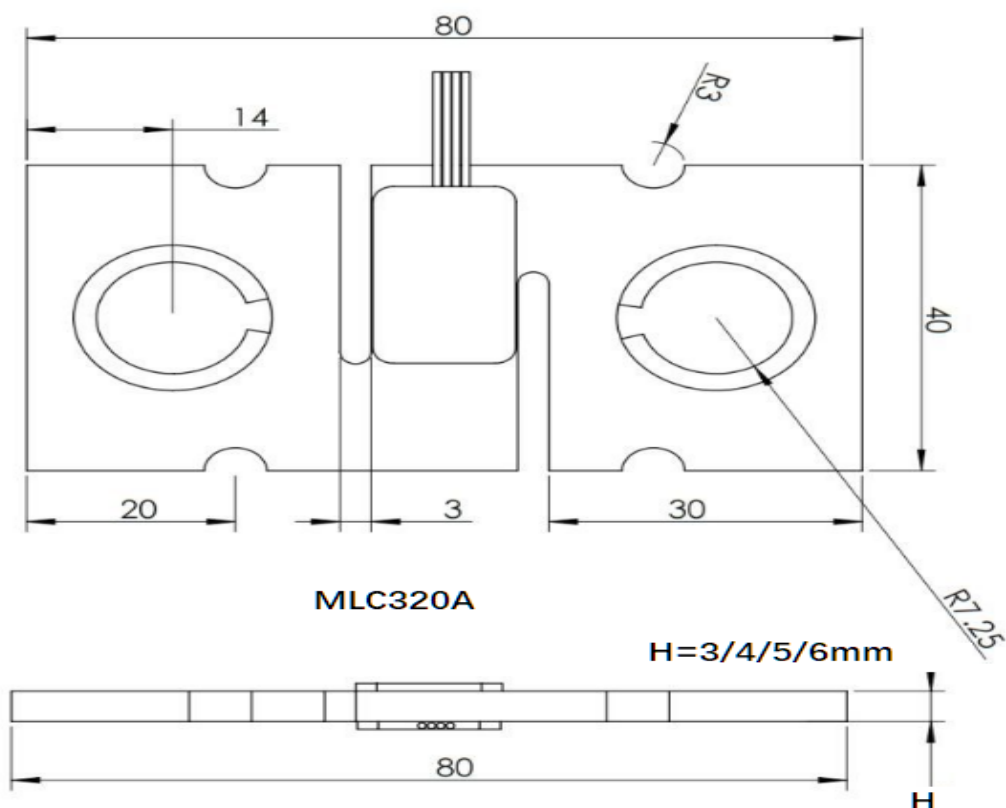
Material: Alloy steel, Stainless steel, Aluminium alloy

Application: Tensile testing machine, hook scale load cell, safety overload test

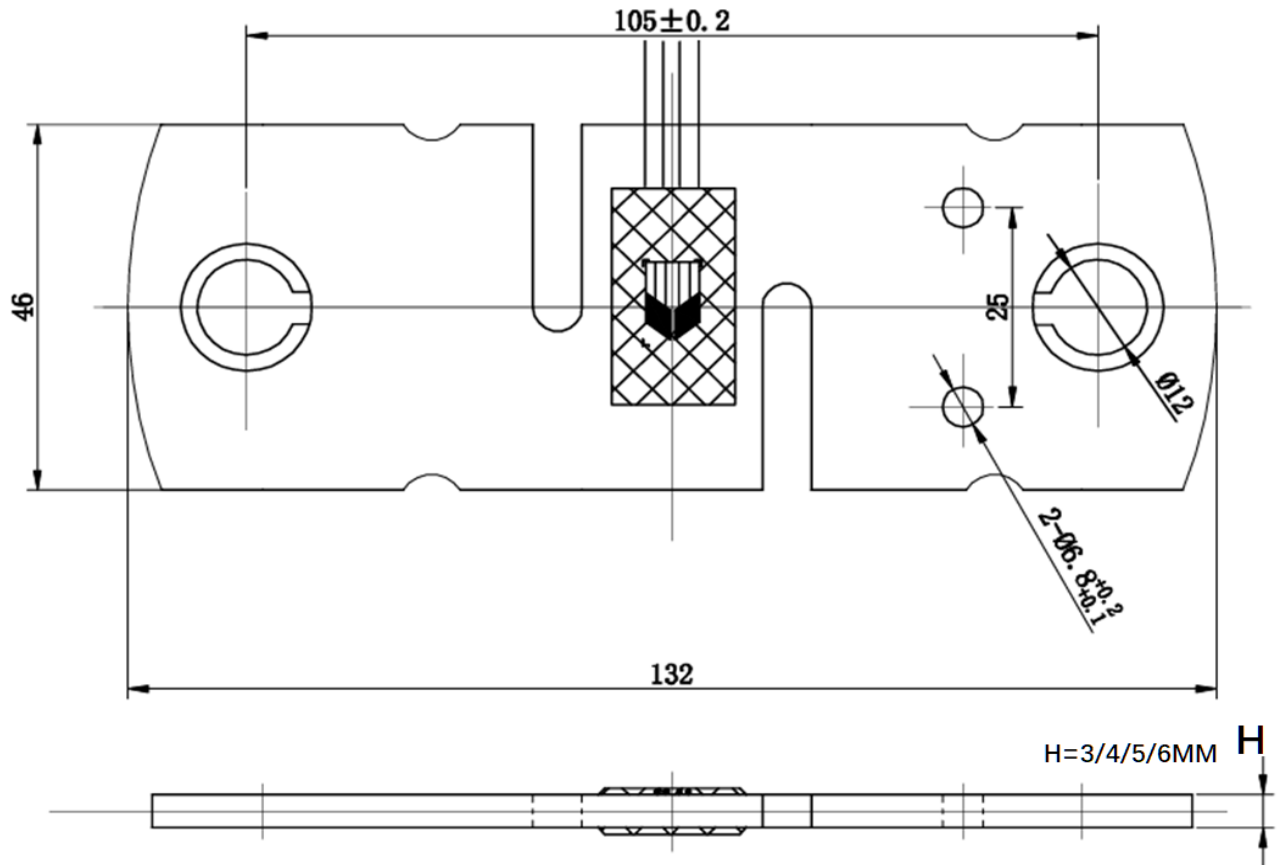




MLC320K



MLC320A



MLC320L

Technical specifications

Comprehensive error:	0.1%FS	Output resistance:	352±5Ω
Rated output:	1.0,1.5,2.0±0.15mv/v	Insulation resistance:	≥ 5000MΩ(100VDC)
Nonlinearity:	0.1%FS	Operating Voltage:	9~12VDC
Lag:	0.1%FS	Compensation temperature:	-10~+40 °C
Repeatability:	0.1%FS	Operating temperature:	-20~+55 °C
Creep:	0.1%FS/10MIN	Effect of Temp. on zero point:	0.1%FS/10 °C
Zero balance:	±1%FS	Effect of Temp. on sensitivity:	0.1%FS/10 °C
Input resistance:	380±10Ω	Protection level:	IP66 & IP68