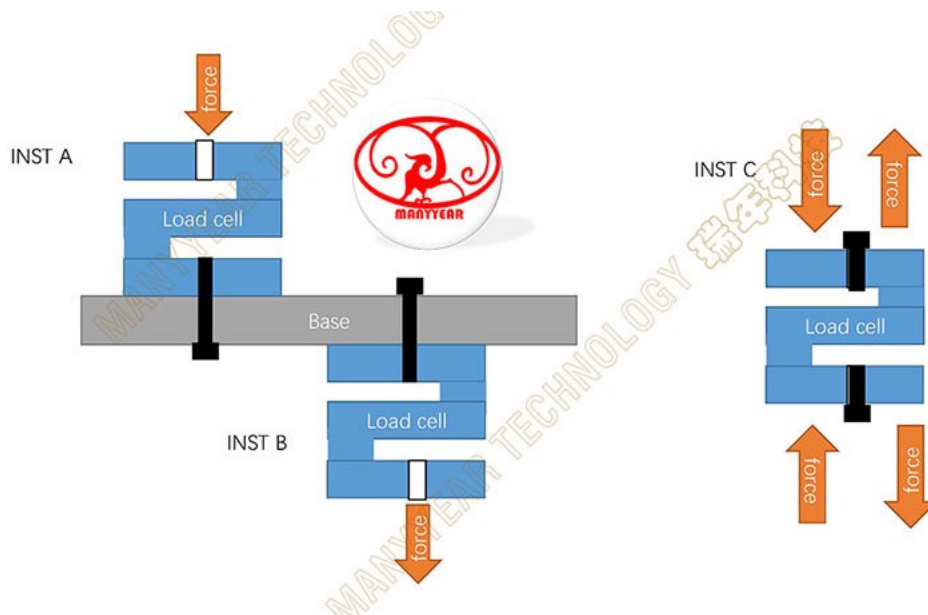




MLC312 -Truck Scale Electronic Floor Scale S-type Load Cell 15t

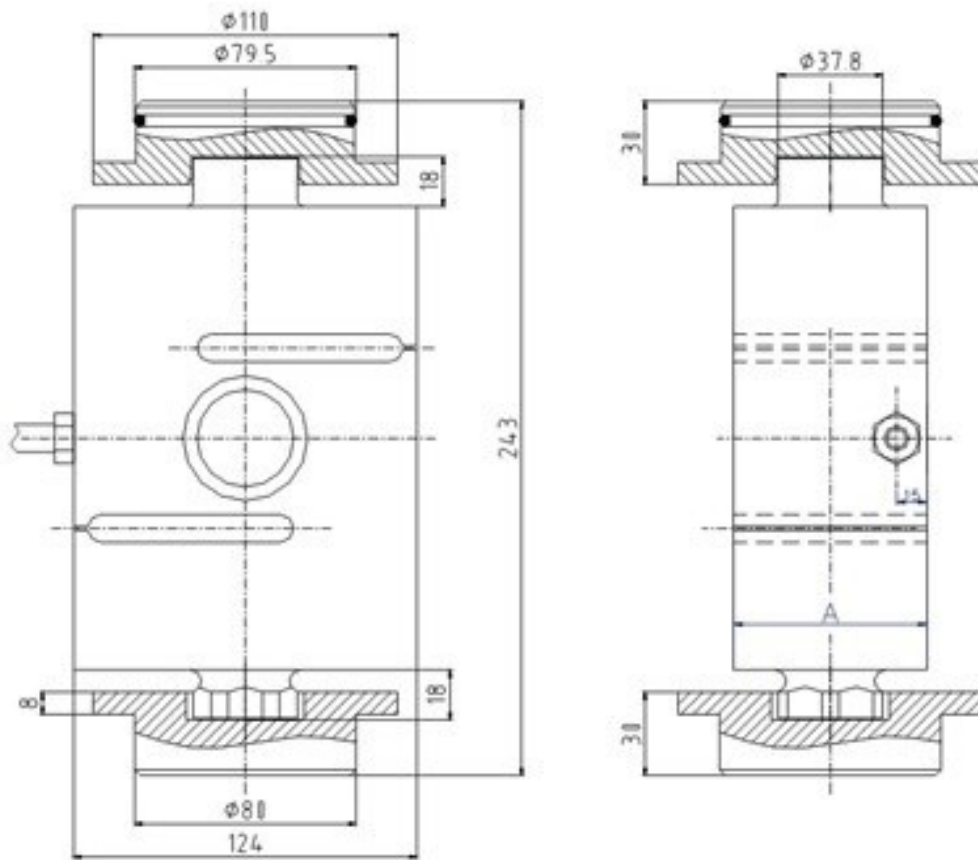
Model: MLC312
Category: S-type load cell
Range : 15t, 20t, 30t
Size: 124*70*243mm; 124*80*243mm
Material: Alloy steel, Stainless steel
Application: Truck scale, electronic floor scale





MANYEAR TECHNOLOGY

Tension and Compression Load Cell Catalog



Other sizes

Range(ton)	"A"
15t,20t	70mm
30t	80mm

Technical specifications

Comprehensive error:	0.03%FS	Output resistance:	352±3Ω
Rated output:	2±0.002mv/v	Insulation resistance:	≥5000MΩ(100VDC)
Nonlinearity:	0.03%FS	Operating Voltage:	9~12VDC
Lag:	0.03%FS	Compensation temperature:	-10~+40°C
Repeatability:	0.02%FS	Operating temperature:	-20~+65°C
Creep:	0.02%FS/10Min	Effect of Temp. on zero point:	0.03%FS/10°C
Zero balance:	±1%FS	Effect of Temp. on sensitivity:	0.02%FS/10°C
Input resistance:	380±3Ω	Protection level:	IP68