



MLC305- Tension measurement hook scale safety overload S-type tension

load cell

Model: MLC305

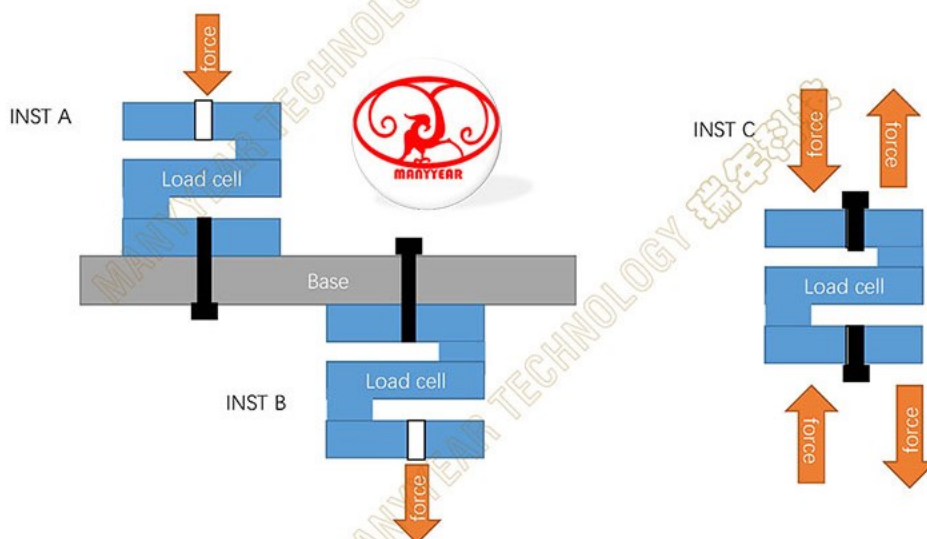
Category: S-type load cell

Range: 10KLB

Size: 238.1*76.2*25.4mm

Material: Alloy steel, Stainless steel

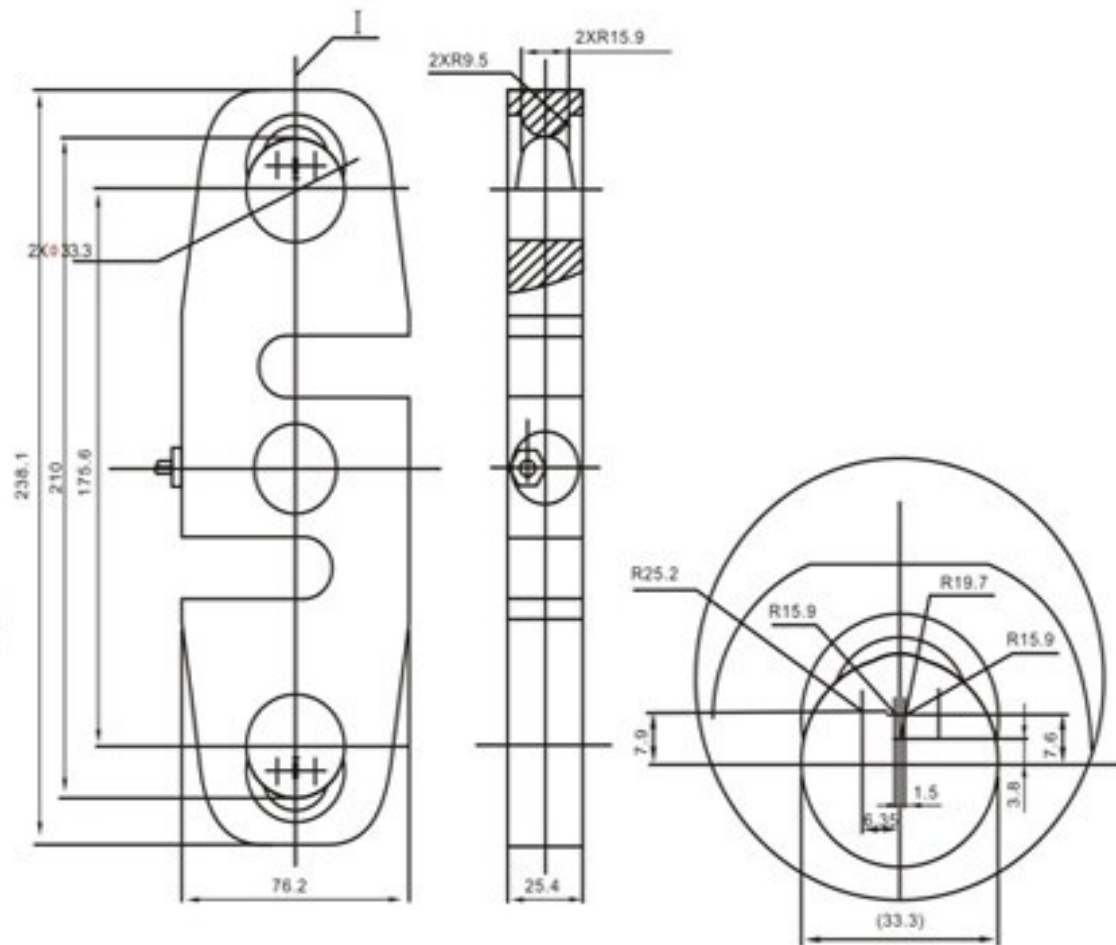
Applications: Hook scales, crane safety overload, tension and compression tests, safety overload tests, tension tests





MANYYEAR TECHNOLOGY

Tension and Compression Load Cell Catalog



Technical specifications

Comprehensive error:	0.03%FS	Output resistance:	352±5Ω
Rated output:	3.0±0.005mv/v	Insulation resistance:	≥5000MΩ(100VDC)
Nonlinearity:	0.05%FS	Operating Voltage:	9~12VDC
Lag:	0.05%FS	Compensation temperature:	-10~+40 °C
Repeatability:	0.03%FS	Operating temperature:	-20~+55 °C
Creep:	0.03%FS/10MIN	Effect of Temp. on zero point:	0.05%FS/10 °C
Zero balance:	±1%FS	Effect of Temp. on sensitivity:	0.05%FS/10 °C
Input resistance:	400±10Ω	Protection level:	IP66 & IP68