



MLC111- Car and sanitation truck weighing, onboard weighing, logistics truck weighing, bridge weighing sensor

model: MLC111

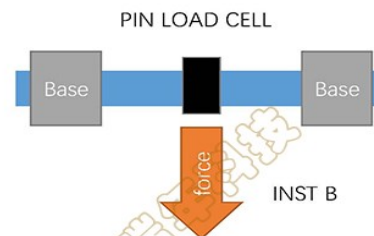
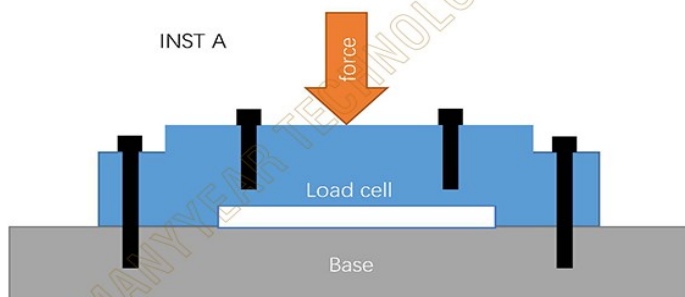
category: Bridge Type Load Cell

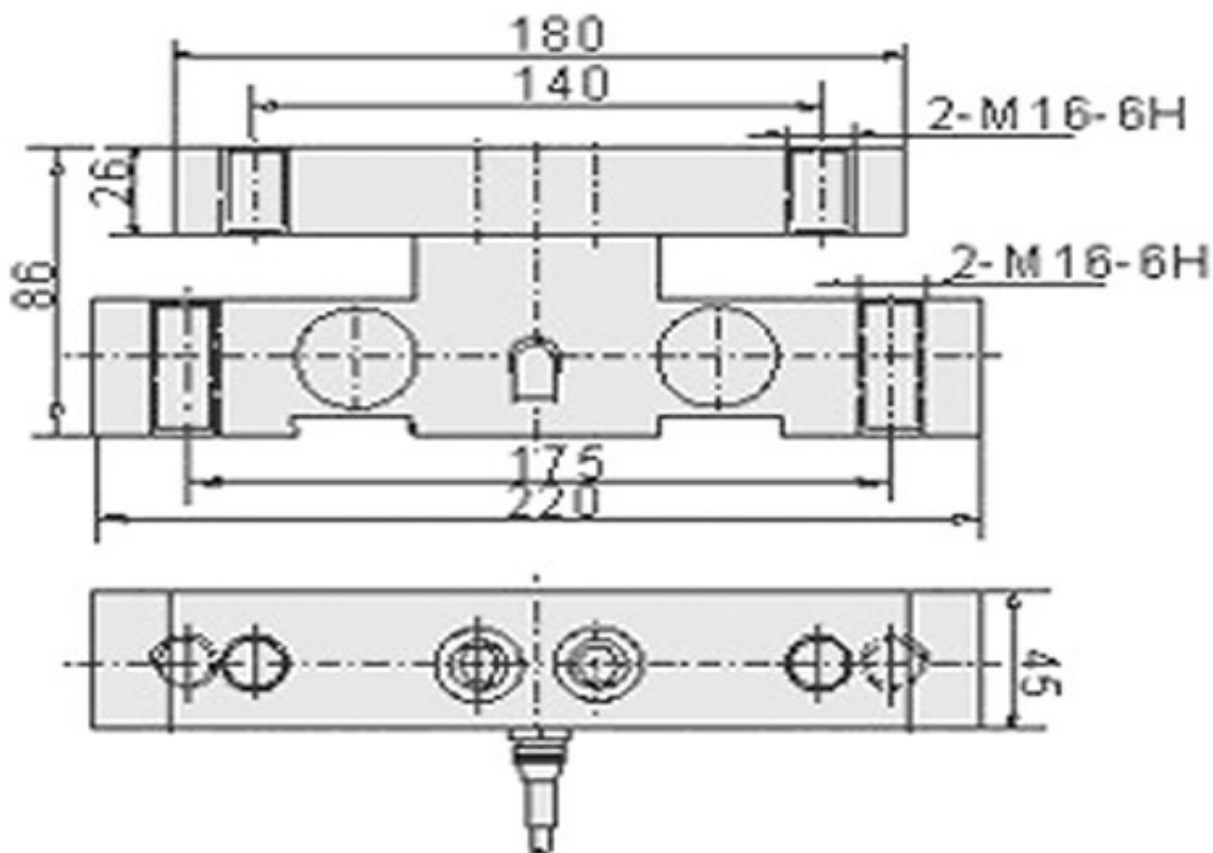
Range: 3t, 4t, 5t

Size: 180*45*86mm

Material: alloy steel , Stainless steel

application: Truck scale , Traffic weighing detection , Track scale , Automobile overload detection





Technical specifications

Comprehensive error	0.05%FS	Output resistance	700±5Ω
Rated output	2±0.005 mv/v	Insulation resistance	≥5000MΩ(100VDC)
Nonlinear	0.05%FS	Operating voltage	9~12VDC
Hysteresis	0.05%FS	Compensation temperature	-10~+40°C
Repeatability	0.03%FS	Operating temperature	-20~+55°C
Creep	0.03%FS/10MIN	Effect of Temp. on zero point:	0.05%FS/10°C
Zero output	±1%FS	Effect of Temp. on sensitivity:	0.05%FS/10°C
Input resistance	700±10Ω	Protection level	IP66 & IP68