

MANYYEAR TECHNOLOGY COMPANY LIMITED

COMPANY PROFILE



WEB: www.manyyear.com

www.cnloadcell.com

MAIL: admin@manyyear.com

Address: Room B423,4th Floor,YouSong Technology Building,DongHuan 1st Road,LongHua District,Shenzhen City,
Guangdong province of China. Post code 518109

MANYYEAR Technology Co., Ltd. was established in 2008.

We focus on mechanical measurement and design, and provide customers with precision load cell, force sensor, torque sensor and pressure sensor products.

We have our own production base, with a complete sensor production process from CNC processing, strain gauge production, metal surface treatment, sensor packaging, sensor testing, engineering testing, sensor calibration, etc.

We have the production capacity of providing millions of qualified products to customers every month.

We have passed ISO9001 standard certification. Our products have CE, ROHS, invention patents and other qualifications.

We provide OEM and ODM services to our customers.

We provide free design assistance to our customers.

Our product

Load Cell | Force Sensor | Torque Sensor | Pressure Sensor | Infrared Pyrometer
| Weighing Controller | Pressure Controller

Our strengths

S1. Professional production; S2. 20 years of professional manufacturing capacity; S3. Scale production capacity;

S4. On time delivery capability of products; S5. Standard workshop

Engineering test

T1. Stress testing equipment with maximum 800t and minimum 20g; T2. High precision electronic balance analysis laboratory;
T3. Machining capacity of multi precision CNC; T4. 24-hour environment and life test

Quality assurance

Q1. The factory implements ISO9000 standard; Q2. Environmental standards; Q3. CE standard; Q4. Rohs standard;
Q5. New practical patent; Q6. technical support; Q7. Assist customer design; Q8. Complete solution; Q9. OEM / ODM support

PRODUCTION CATEGORY

Weighing
load cell



Force
sensor



Torque
sensor



Pressure
sensor



Infrared
pyrometer



Digital
Instrument



The Enterpris Culture

Technology is changing lives!

Professional
many year is only for force sensor
since 1998.

Technology
we provide the load cell, pressure
sensor, force sensor and the force
measurement solution...

More



The Production Capacity

Provide Design, manufacture, sales,
server of load cell since 1998.

20,000 square meter industrial park.

1000+ worker.

26 product station for porcess.

More



The engineering and Testing

800t hydraulic machine.

Precision balance laboratory.

0.001g to 20t Weihing machine.

Truck scale test station.

CNC machine.

Life test chamber.

More



The quality and Qualifaction

ISO, OIML, ROHS, CE.Utility Patents.

More



MANYYEAR

WHO TRUST US

亚马逊
amazon.cn

Alibaba.com
阿里巴巴

apex

美的 Midea

FLEXTRONICS X

TCL

vtech®
伟易达

AIR PRODUCTS

华商龙
WORLD SHINE

Withings
Inspire health

Topband 拓邦

shelfx

XAG

ZICOX
INTELLIGENT
TECHNOLOGY

ELITechGroup
SOLUTIONS
tailored to your needs

Hontech

Engineering test

T1. Stress testing equipment with maximum 800t and minimum 20g; T2. High precision electronic balance analysis laboratory;
T3. Machining capacity of multi precision CNC; T4. 24-hour environment and life test



R&D CENTER
QE CENTER



max 50kg load test

500kg impact test



24hr Hi-Lo temp. life test chamber














max 20t force over load test

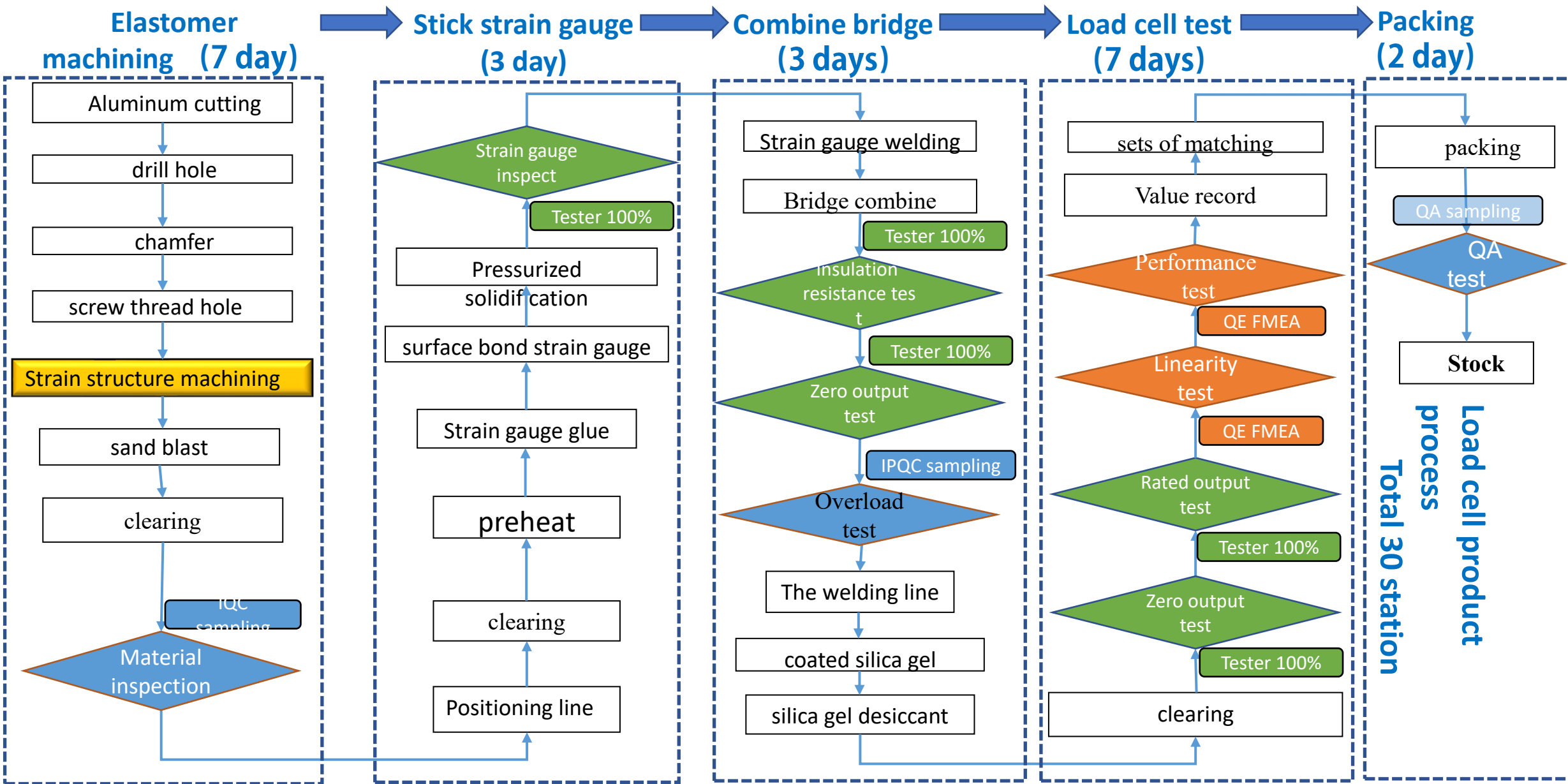


max 800t force test

Manufacturing capacity

S1. Professional production; S2. 20 years of professional manufacturing capacity; S3. Scale production capacity; S4. On time delivery capability of products; S5. Standard workshop.

Product process								
<p>1, CNC CENTER High precision CNC machine tools</p>	<p>2, Elastomer surface treatment Environmental protection, safety of surface treatment center</p>	<p>3, Elastomer installation calibration Application of laser positioning technology, the calibration strain gauge installation location。</p>	<p>7, besmear JiaoGong station This work station use environmental protection silicone, covering the strain gauge and the welding line.</p>	<p>8, silica gel drying Have good coated silica gel products will be 24 hours of natural drying under constant temperature environment.</p>	<p>9, attachment assembly Attachment is installed in the stress sensor.</p>			
								
<p>4, strain gauge center Factories have strain gauge design and production technology.</p>	<p>5, strain gauge is stuck Strain gauge installation work station directly determine the precision of the sensor</p>	<p>6, strain gauge bridge connection Strain gauge and temperature compensator welded into a complete weighing unit</p>	<p>10, the sensor output test Use standard testing sensor, record the data.</p>	<p>11, sampling inspection The test sample for second sampling inspection.</p>	<p>12, sensor group bridge According to the measured data filtering with the specifications of the sensor, forming a complete weighing.</p>			
								



Quality assurance

Q1. The factory implements ISO9000 standard; Q2. Environmental standards; Q3. CE standard; Q4. Rohsl standard; Q5. New practical patent; Q6. technical support; Q7. Assist customer design; Q8. Complete solution; Q9. OEM / ODM support



TST Testing Technology

Certificate Of Compliance

Certificate No.: TST2019011001-IEC
Applicant: MANY YEAR TECHNOLOGY COMPANY LIMITED
 Room B423-4th Floor, Youlong Technology Building, Donghuan 1st Road, Longhua District, Shenzhen City, Guangdong province of China

Trade Name: /
Product: LOAD CELL
Main Test Model: MLC716A, MLC100, MLC200, MLC300, MLC400, MLC500, MLC600, MLC700, MLC800, MLC900, MLC204, MLC5105, MLC640, MLC641, MLC639, MLC716A, MLC716AE, MLC803, MLC810, MLC902, MLC928DA

Additional Model: /
Test Standard: EN 61000-6-3; 2007+A1; 2011+AC:2012
 EN 61000-6-1; 2007
 EN 61000-3-2; 2014
 EN 61000-3-3; 2013

As shown in the Test Report No.: TST2019011001-IEC

The EUT described above has been tested by us with the listed standards and found in compliance with the council EMC directive 2014/30/EU. It is possible to use CE marking to demonstrate the compliance with this EMC Directive.
 The certificate applies to the tested sample above mentioned only and shall not imply an assessment of the whole production.

Approved by: **Andy Zheng**

 Manager
 Jan 23, 2019



TST Testing Technology Co., Ltd
 2F Yanhe Building, Heitan Road, Hengye Town, Dongguan, Guangdong, China
 Tel: 86-0769-85088650 Fax: 86-0769-85088645 E-mail: tsst@163.com http://www.tst-test.com



CERTIFICATE OF QUALITY MANAGEMENT SYSTEM CERTIFICATION

Certificate No.: 19819QA1972R05
Unified Social Credit Code / Organization Code: 91441900MA4UPGTPDC

We hereby certify that the organization:
Dongguan jianli electric measurement technology co. LTD
 is in conformity with Quality Management System Standard:
GB/T19001-2016 Idt ISO9001:2015
 The certificate is valid to the following product(s)/service:
Production of weighing sensors (except products subject to licensing requirements)

Registration Address: Area A, 2 / f, building A, no. 81, east huahong business street, zhenxing north road, oudeng village, gaobu town, dongguan city
 Audit Address: Area A, 2 / f, building A, no. 81, east huahong business street, zhenxing north road, oudeng village, gaobu town, dongguan city


Date of Initial Issuance: Jan 23, 2019
 Date of This Issuance: Jan 23, 2019
 Date of Expiration: Jan 22, 2022




中国认可
国际互认
管理体系
MANAGEMENT SYSTEM
CNAS C178 M



Issued By: 



Test Report

Report No.: TST2019011001-3RR **Date:** Jan 23, 2019 **Page 1 of 8**


Applicant: MANY YEAR TECHNOLOGY COMPANY LIMITED
Address: Bldg 5, Taifeng Industrial Park, No 10, Jiansan Road, Shajing Sub-district, Baoan District, Shenzhen, China

The following sample(s) was/were submitted and identified on behalf of the clients as:

Sample Name: LOAD CELL
Main Model: MLC716A, MLC100, MLC200, MLC300, MLC400, MLC500, MLC600, MLC700, MLC800, MLC900, MLC204, MLC5105, MLC641, MLC641, MLC639, MLC716A, MLC716AE, MLC803, MLC810, MLC902, MLC928DA

Additional Model: /
Sample Received Date: Jan. 16, 2019
Testing Period: Jan. 16, 2019 To Jan. 23, 2019
Test Requested: 1. As specified by client do screen Lead(Pb), Cadmium(Cd), Mercury(Hg), Chromium(Cr)and Bromine(Br)in the submitted sample(s) by XRF.
 2. As specified by client when screening results exceed the XRF screening limit in IEC62321-2:2013 Edition 1.6, further use of wet chemical methods are required to test Lead(Pb), Cadmium(Cd), Mercury(Hg), Hexavalent Chromium(Cr(VI)), Polychlorinated Biphenyls (PCBs), Polychlorinated Diphenyl Ethers (PCDEs), Polychlorinated diphenyl ethers (PBDEs) and Phthalates such as Bis(2-ethylhexyl) phthalate (DEHP), Butyl benzyl phthalate (BBP), Dibutylphthalate (DBP), and Diisobutyl phthalate (DIBP) in the submitted sample(s).

Test Method: /
Test Result: Please refer to next page(s).
Conclusion: The test results comply with the limits of RoHS 2.0 Directive (EU) 2015/863 amending Annex II to Directive 2011/65/EU.

Signed for and on behalf of

Andy Zheng
 Technical Director

This report shall not be altered, reworked or deleted. The results shown in this test report apply only to the sample(s) tested. Without written approval of TST, this test report shall not be copied (except to fill and published as an advertisement). TST Periodic A Chemical Lab.

TST Testing Technology Co., Ltd
 信维检测技术服务(东莞)有限公司
 2F Yanhe Building, Heitan Road, Hengye Town, Dongguan, Guangdong, China. Tel: 86-0769-85088650 Fax: 86-0769-85088645 E-mail: tsst@163.com http://www.tst-test.com



国家知识产权局

100083
 北京丰海地区学院路30号航天天晟五楼17层10室 北京商专办
 信维知识产权代理事务所(普通合伙)
 吴少东 010-42884077

发文日:
2019年12月31日

中国发明专利号: 201920961465.1 发文序号: 201912290067520

申请人: 信维检测技术服务(东莞)有限公司

发明创造名称: 双向称重传感器装置

授予实用新型专利权通知书

1. 根据专利法第三十条及实施细则第五十一条的规定, 上述实用新型专利申请经审查, 没有发现驳回理由, 授予实用新型专利权通知书。
 申请人收到本通知书后, 应当根据办理登记手续的有关规定办理登记手续。
 申请人办理登记手续后, 国家知识产权局将依法授予实用新型专利权的决定, 颁发相应的专利证书, 同时予以登记和公告。
 请尚未办理登记手续的, 视为放弃取得专利权的权利。

2. 授予专利权的实用新型专利申请是以申请人于申请日 2019年6月24日提交的文本为基础。

3. 审查员根据修改后的内容为:
 注: 在本通知书发出前收到的申请人主动修改的申请文件, 不予考虑。

审查员: 李立 审查日期: 专利审查合作中心实用新型审查部

联系电话: 010-87061186
 地址: 北京市海淀区中关村大街11号15层1508室

2019.2 通知书编号: 19262986 120083 此通知书将通过11185士通网4号 国家知识产权局中国受理系统 电子邮件, 以普通邮件或专利证书的形式寄交申请人, 除具有回执外, 以取得回执形式递交的文书为准。

LOAD CELL

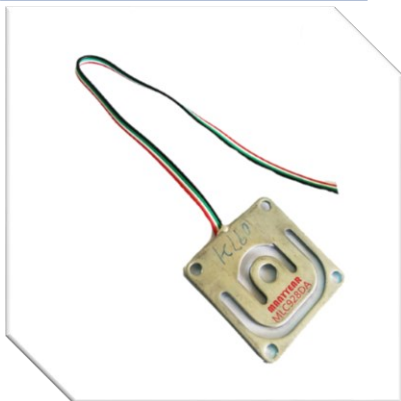
1 ✓	Multi-load range:	0-20G,100G,1000G,10KG,100KG,1T, 10T,100T,400T
2 ✓	Various shapes available	Bridge type, Beam type, Pin type,S type,Flat type
3 ✓	Multiple working voltage	3.0v, 5v, 9v, 12vdc
4 ✓	Multi-signal output	mv/v,0-5v, 0-10v, 4-20mA, RS485
5 ✓	Multi-work temp.:	,-30c to 0c, 60c, 150c
6 ✓	High precision	0.01%fs, 0.02%,0.03%fs,0.05%fs, 0.1%fs
7 ✓	High Customer Support	IOS9000, CE, ROHS, OEM, ODM



Application:

body scale, kitchen scale, jewelry scale, platform scale, packaging scale, batching scale, inspection scale, belt scale and automatic weighing sensor system

Micro Load Cell



Parallel Beam Load Cell



Shear Beam Load Cell



Bridge Load Cell



FORCE SENSOR

1 ✓	Multi-force range	0-20G,100G,1000G,10KG,100KG,1T, 10T,100T,400T
2 ✓	Multi force type	compression, tension, Multidirectional force
3 ✓	Multiple working voltage	3.0v, 5v, 9v, 12vdc
4 ✓	Multi-signal output	mv/v,0-5v, 0-10v, 4-20mA, RS485
5 ✓	High precision	0.01%fs, 0.02%,0.03%fs,0.05%fs, 0.1%fs
6 ✓	High protection level	IP65,IP66
7 ✓	High Customer Support	IOS9000, CE, ROHS, OEM, ODM



Application:

Force testing machine force sensor, hydraulic machinery force sensor, textile tension force sensor, cable tension force sensor, impact force sensor, tension force sensor, safety overload force sensor.

S Tension
Load Cell



Column Force
Load Cell



Bottom
Force Sensor

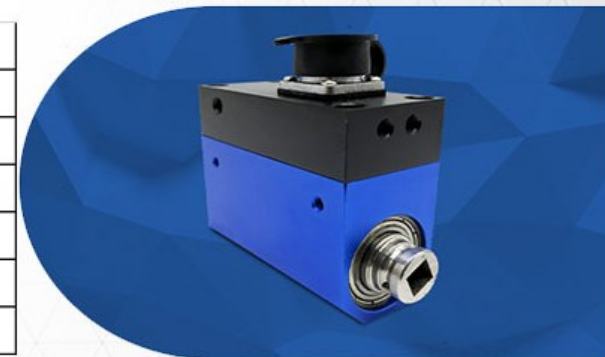


Washer Force
Load Cell



TORQUE SENSOR

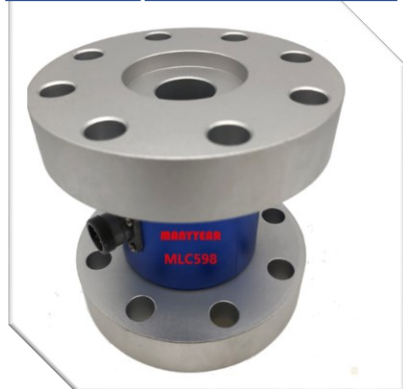
1 ✓	Multi-range	0.03, 0.5, 1.0, 10, 100, 1k, 10k, 50kum
2 ✓	Multi force type	Dynamic type, static type
3 ✓	Multiple working voltage	5v, 9v, 12, 24vdc
4 ✓	Multi-signal output	mv/v, 0-5v, 0-10v, 4-20mA, RS485
5 ✓	High precision	0.1%, 0.2%, 0.3%fs
6 ✓	High response time	100us
7 ✓	High Customer Support	IOS9000, CE, ROHS, OEM, ODM



Application:

mechanical torque sensor, gear torque, torque wrench, testing machine torque, electric screwdriver, automatic screw machine, motor torque, viscometer, winding tension sensor.

Flange Static Torque Sensor



Shaft Static Torque Sensor



Micro Dynamic Torque Sensor



Flange Dynamic Torque Sensor



PRESSURE SENSOR

1 ✓	Multi-pressure range	, -20kpa, 500pa, 1kpa, 1bar, 10bar, 100bar, 1kbar, 10kbar,
2 ✓	Multi pressure type	Negative pressure, absolute pressure, gauge pressure
3 ✓	Multiple working voltage	5v, 9v, 12v, 24v, 36v
4 ✓	Multi-signal output	mv/v, 0-5v, 0-10v, 4-20mA, RS485
5 ✓	High precision	0.1%, 0.2%, 0.5%fs
6 ✓	Wide temperature range	, -265c, -196c, -100c, 60c, 150c, 400c, 800c, 1000c
7 ✓	Multiple media	Air, liquid, melt, mixed substance



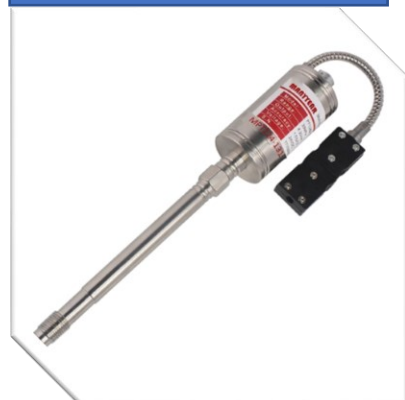
Application:

High temp pressure, liquid nitrogen pressure, liquid oxygen pressure, liquid hydrogen pressure, food processing, gas pressure, liquid pressure, melt pressure, water vapor pressure, water level measurement, oil measurements

Universal Pressure Sensor



High Temp. Pressure Sensor



Differential Pressure Sensor



Level Pressure Sensor



Pressure Switch



INFRARED PYROMETER

1 ✓	Multi-range optional	, -40c~0c~100c~500c~1000c~2000c~3000c
2 ✓	Multi-wavelength optional	0.85um,1.0um,1.6um, 2.3um,3.9um,7-14um
3 ✓	Safe work power	12-24VDC (100mA)
4 ✓	Multiple signal output	0-5vdc, 0-10vdc, 4-20mA, RS485, RJ45
5 ✓	Various focal lengths	10:1, 16:1.30:1,100:1, 200:1, 300:1
6 ✓	Higher system accuracy	±0.1centigrade, ±1.0centigrade
7 ✓	Higher resolution	0.1 centigrade



Application:

metal smelting, metal heat treatment, aluminothermic processing, flame temperature, safety monitoring, food processing, pharmaceutical production and other temperature measurement.

MPT616



MPT614



MPT613



DIGITAL INSTRUMENT

1 ✓	Multi-Voltage optional	3.3vdc, 5vdc, 9-12vdc, 24-36vdc, 95-240vac
2 ✓	Multi-Application optional	weighing ADC, platform scale, packing scale, batching scale, vending machine
3 ✓	Analog Signal Output	mv/v, 0-5vdc, 0-10vdc, 4-20ma
4 ✓	Control Signal Output	Relay, Ttl, I/O
5 ✓	Digital Signal Output	Rs485, Rs232, BT, Wireless
6 ✓	Multi-Function	Calibration, Zero, Tare, Alarm setting
7 ✓	Higher resolution	0.1 g



Application:

weight indicators, weighing controllers, weight transmitters, pressure controllers, force measurement controllers, packaging scale controllers, belt scale controllers, batching scale controllers, platform scale controllers.

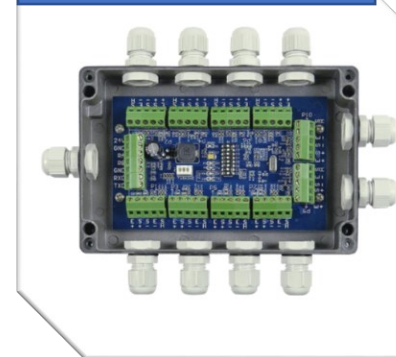
WEIGHT
CONTROLLER



PRESSURE
CONTROLLER



WEIGHING
TRANSMITTER



DIGITAL
LOAD CELL

